

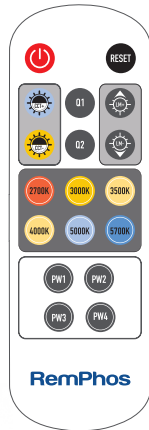
RemPhos IP65 RATED LED LINKABLE BAR / (LBI 65)



PART #

JOB NAME

TYPE



The LBI 65 is an IP65 rated linkable fixture or retrofit kit. It is great for parking garages, coolers, outdoor canopies, tunnels, walkways and more. Liquid tight end caps allow for accessories to be used while still keeping the IP65 rating.

- Suitable for wet locations.
- 24 skus in 1 with SuperFlex technology.
- Link multiple fixtures together.
- Seamless connectors allow multiple units to run on a single power source.
- Polycarbonate housing with inner metal structure and heat sink.
- Liquid tight fitting junction box available.
- In-line mounting.
- Quick connection in-line occupancy sensor option available.
- Each linkable bar comes with wattage and CCT adjusting remote and 2 mounting brackets.
- Built-in white-tuning control channel.
- **SIMPLE & NETWORK LIGHTING CONTROL** options available. (see pg. 2 & 5-7)



SCAN FOR
UP-TO-DATE INFO

SUPERFLEX SWITCH BETWEEN
4 WATTAGES & 6 CCTS



SENSOR READY

AUX OUTPUT

OPTIONAL OCC

EFFICACY (LIGHT ENGINE)

OPERATING TEMP

CRI

WHITE TUNING

BEAM ANGLE

INGRESS PROTECTION

IMPACT RESISTANCE

100,000hrs RATED LIFE

PART #	UPC	DESCRIPTION	LUMENS	WATTAGE	CCT
RP-LBI65-2F-6W-40K-WC	197810004509	2 FT IP65 RATED LIGHT BAR	640-1920	4W/ 6W /9W/12W	2700K/3000K/3500K/ 4000K /5000K/5700K
RP-LBI65-3F-10W-40K-WC	197810004516	3 FT IP65 RATED LIGHT BAR	960-2400	6W/ 10W /12W/15W	
RP-LBI65-4F-25W-40K-WC	197810004523	4 FT IP65 RATED LIGHT BAR	1920-4000	10W/15W/20W/ 25W	

DEFAULT WATTAGE AND CCT ARE SHOWN IN BOLD.



PENDING

HEADQUARTERS & TRAINING CENTER • Cary, IL | INNOVATION & MANUFACTURING CENTER • Middleton, MA

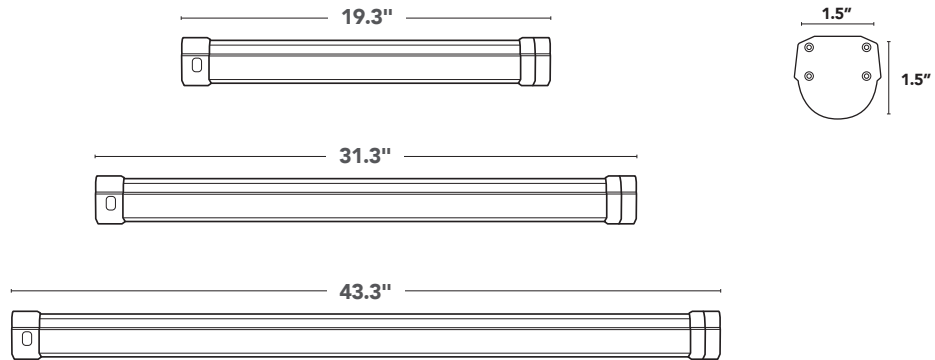
847.380.3540 • led-llc.com • sales@led-llc.com

12.18.24 Information is subject to change without notice.

Light Efficient Design



DIMENSIONS

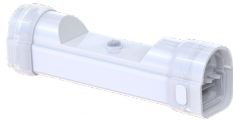


CONTROL OPTIONS

SIMPLE LIGHTING CONTROL



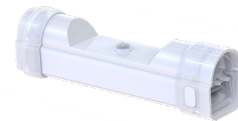
RP-LBI65-PIR-A
IN-LINE PIR OCCUPANCY
MOTION SENSOR



NETWORK LIGHTING CONTROL



RP-LBI65-BLE-PIR-A
IN-LINE NETWORK LIGHTING CONTROL
BLUETOOTH PIR MOTION SENSOR



INCLUDED HARDWARE

REMOTE CONTROLLER



ALLEN KEY



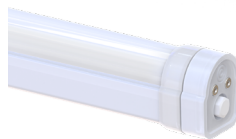
2 STAINLESS STEEL SELF TAPPING SCREWS



2 BRACKETS








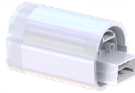

SHIPS WITH A WATERPROOF ENCAP
INSTALLED - 1 WAY MOISTURE VALVE





CABLES + CONNECTORS

PART #				DESCRIPTION
6IN	12IN	24IN	LINKING CABLES	
RP-LBI65-LC-6IN-DIM	RP-LBI65-LC-12IN-DIM	RP-LBI65-LC-24IN-DIM		

PART #	DESCRIPTION		
RP-LBI65-IP-3FT	3FT INCOMING POWER CABLE WIRE WHIP 		
RP-LBI-SSC-CCTDIM-10P	SEAMLESS CONNECTOR W/ CCT CCT IN LINE SEAMLESS CONNECTOR 		
RP-LBI-SSC-NOCCTDIM-10P	NON-DIMMING SEAMLESS CONNECTOR AVAILABLE FOR NON-DIMMING APPLICATIONS AND NON-CCT CONTROL APPLICATIONS. 		
RP-LBI65-IPC-12NPT-3FT	INCOMING POWER CONDUIT ADAPTER 		
RP-LBI65-SPND-SS-10FT	STAINLESS STEEL, WATERPROOF AIRCRAFT SUSPENSION CABLE 		

LINKING QTY

LINKING QUANTITY

	120V	208V	240V	277V
4FT	30 BARS	40 BARS	40 BARS	40 BARS
3FT	40 BARS	40 BARS	40 BARS	40 BARS
2FT	40 BARS	40 BARS	40 BARS	40 BARS

LINKING POSSIBILITIES

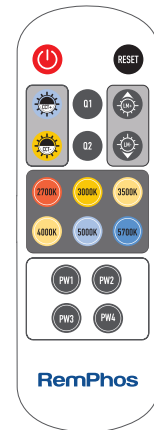
- Linking cables will lower connectable quantities.
- The linking numbers are based on using the LBI Junction box and connected end to end.
- If linking cables are used when powered on 120VAC Linking number is reduced to 24pcs.
- Linking does not include 0-10V linked control. This will depend on the controlling device.



24 SKUs in 1 WITH FLEXWATT™ & FLEXCOLOR™ TECHNOLOGY (CONTROLLABLE FROM REMOTE)



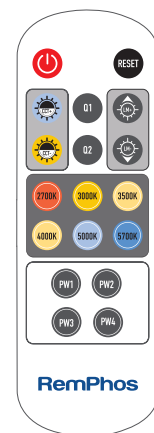
	PW1	PW2	PW3	PW4
2FT	4W	6W	9W	12W
3FT	6W	10W	15W	20W
4FT	10W	15W	20W	25W



- Eliminate ordering and stocking multiple wattages and color temperatures. Product offers 24 SKUs in 1 unit which can easily be configured to 4 different wattage packages and 6 different CCTs.



2700K	2700°K WARM	4000K	4000°K NEUTRAL
3000K	3000°K WARM	5000K	5000°K COOL
3500K	3500°K NEUTRAL	5700K	5700°K COOL



- Product ships at a default color temp (K) and wattage setting (install as is, or tailor the settings to fit your needs).
- Save on labor costs by having us factory pre-set the wattage and color temperature. (possible upcharge - contact us for more details)

FLEXCONTROL™ TECHNOLOGY

- Order control ready or basic control (integrated high/low and daylight sensor) or network lighting controls.
- Optional sensors are directly linkable to the light bars.
- Our basic motion/daylight control (RP-LBI65-PIR-A ordering code) is adjustable via remote control for sensitivity duration of time at high light level before dimming to low duration of time at low light level before turning off ramping up and down light levels based on daylight and the dimmed light level %.

SUITABLE FOR WET LOCATIONS

PASS-THROUGH 0-10V DIMMING, AUXILIARY 12V OUTPUT, & COLOR CONTROL CHANNEL

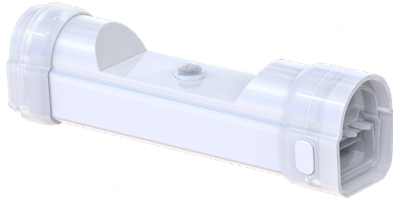
- Allows all light bars to be dimmed & white tuned together as a group.

ADAPTABLE MOUNTING

- Included mounting clips (x2) made from stainless steel, painted white to match fixture. Suspension mounting holes in bracket for 3/8" diameter threaded rod. Included stainless steel self drilling screws for surface mounting.



ORDERING **RP-LBI65-PIR-A** IN ADDITION TO THE LBI PART NUMBER UPGRADES THE FIXTURE WITH A **SIMPLE CONTROL** IN-LINE PASSIVE INFRARED OCCUPANCY SENSOR.



ATTRIBUTES

DETECTION TECHNOLOGY	PASSIVE INFRARED (PIR)
DETECTION TYPE	OCCUPANCY
SENSOR POWER	12VDC
GROUPABLE	NO
NETWORK LIGHTING CONTROL	NO
COMMISSIONING METHOD	IR REMOTE
REMOTE	IR11
DAYLIGHT HARVESTING	YES
HI OR LOW TRIM	NO
BI-LEVEL DIMMING	YES
NETWORK TECHNOLOGY	NONE
INSTALLATION TYPE	INTERNAL
DLC LISTED	YES
CONTROL CAPACITY	15 BARS

IR11 REMOTE



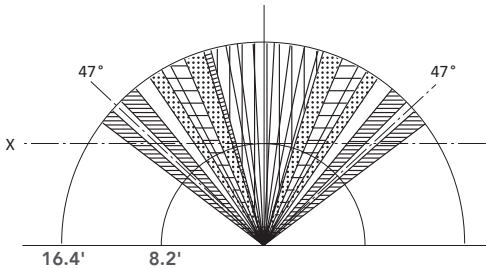
- Permanent ON/OFF Function
- Permanent OFF
- Sensor Mode
- Reset Function
- Disable Daylight Sensor
- Test Mode

FOR MORE INFORMATION ON THE IR11 REMOTE SCAN BELOW

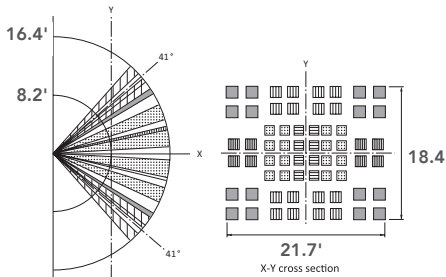


DETECTION PATTERN / RP-LBI65-PIR-A

TOP VIEW



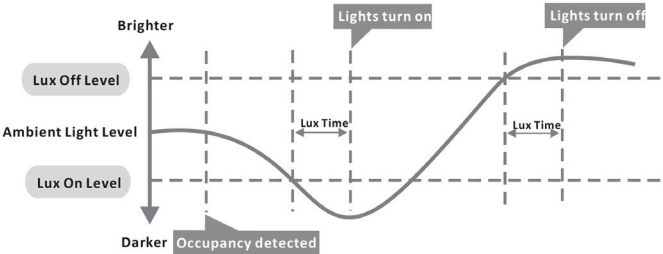
SIDE



DAYLIGHT HARVESTING / OC

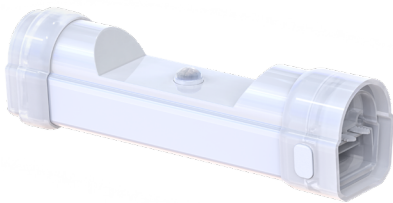
Sensor detects the difference between natural light and artificial light (lamp) from behind the diffuser, switch on automatically (even without movements) when the ambient light is below the target value, and switch off automatically whenever the artificial light is not required (ambient light is bright enough).

NOTE LUX-OFF SAMPLING TIME - 30S. LUX-ON SAMPLING TIME - 10S. LUX-ON FUNCTION WILL ONLY OPERATE WITHOUT MOTION WHEN STANDBY IS SET TO + ∞.





ORDERING **RP-LBI65-BLE-PIR-A** IN ADDITION TO THE LBI PART NUMBER UPGRADES THE FIXTURE WITH A FACTORY INSTALLED **NETWORK LIGHTING CONTROL**. ONCE CONNECTED THROUGH THE SILVAIR APP, THE BLUETOOTH MICROWAVE MOTION SENSOR AND DAYLIGHT HARVESTING TECHNOLOGY CAN MAXIMIZE ENERGY SAVINGS.

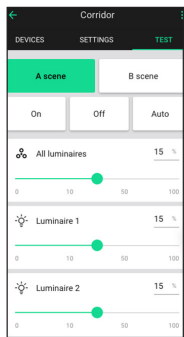


ATTRIBUTES

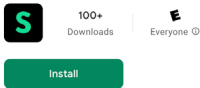
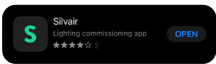
DETECTION TECHNOLOGY	PASSIVE INFRARED (PIR)
DETECTION TYPE	OCCUPANCY / VACANCY
SENSOR POWER	12VDC
GROUPABLE	YES
NETWORK LIGHTING CONTROL	YES
COMISSIONING METHOD	SILVAIR APP* + IR REMOTE FOR RANGE SETTING
REMOTE	N/A
DAYLIGHT HARVESTING	YES
HI OR LOW TRIM	YES
BI-LEVEL DIMMING	YES
NETWORK TECHNOLOGY	BLUETOOTH
INSTALLATION TYPE	INTERNAL
DLC LISTED	YES + DLC NLC
CONTROL CAPACITY	15 BARS

*SEE PAGE 10 FOR MORE INFORMATION ON SILVAIR APP

SILVAIR APP



SILVAIR IS A SOFTWARE AND COMMISSIONING APP THAT CONNECTS AND CONTROLS LIGHTING FIXTURES USING BLUETOOTH MESH TECHNOLOGY.

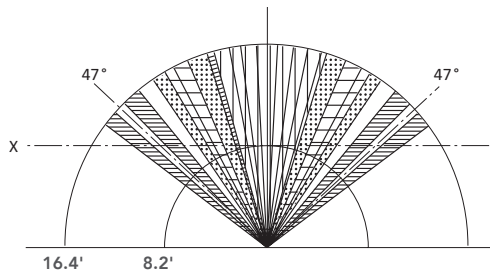


FOR MORE INFORMATION ON THE SILVAIR APP SCAN BELOW OR SEE PG. 10

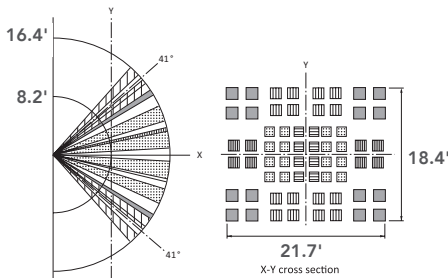


DETECTION PATTERN / RP-LBI-BLE-PIR-A

TOP VIEW

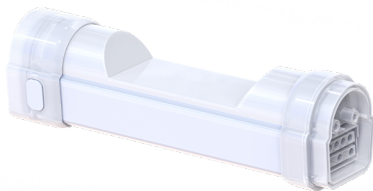


SIDE





ORDERING **RP-LBI65-BLE-A** IN ADDITION TO THE LBI 65 PART NUMBER UPGRADES THE FIXTURE WITH A FACTORY INSTALLED **NETWORK LIGHTING CONTROL**. ONCE CONNECTED THROUGH THE SILVAIR APP, THE BLUETOOTH MICROWAVE MOTION SENSOR AND DAYLIGHT HARVESTING TECHNOLOGY CAN MAXIMIZE ENERGY SAVINGS.

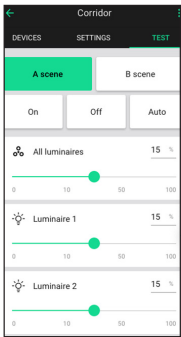


ATTRIBUTES

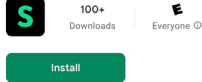
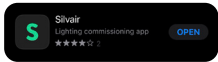
DETECTION TECHNOLOGY	MICROWAVE
DETECTION TYPE	OCCUPANCY / VACANCY
SENSOR POWER	12VDC
GROUPABLE	YES
NETWORK LIGHTING CONTROL	YES
COMISSIONING METHOD	SILVAIR APP
REMOTE	N/A
DAYLIGHT HARVESTING	YES
HI OR LOW TRIM	YES
BI-LEVEL DIMMING	YES
NETWORK TECHNOLOGY	BLUETOOTH MESH
INSTALLATION TYPE	INTERNAL
DLC LISTED	YES + DLC NLC
CONTROL CAPACITY	15 BARS

*SEE PAGE 10 FOR MORE INFORMATION ON SILVAIR APP

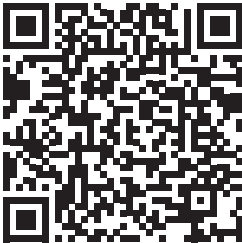
SILVAIR APP

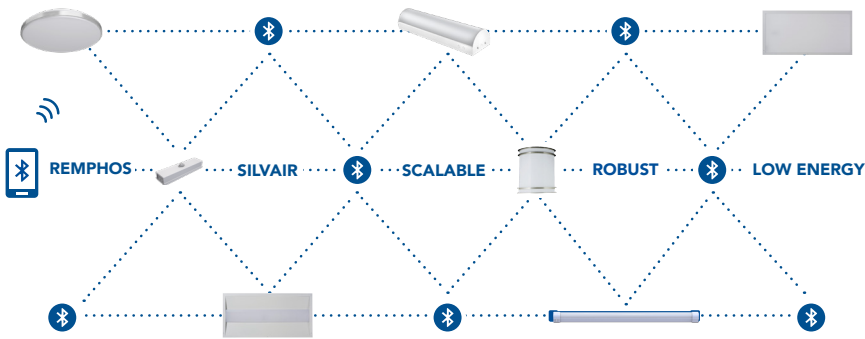


SILVAIR IS A SOFTWARE AND COMMISSIONING APP THAT CONNECTS AND CONTROLS LIGHTING FIXTURES USING BLUETOOTH MESH TECHNOLOGY.



FOR MORE INFORMATION ON THE SILVAIR APP SCAN BELOW OR SEE PG. 10





WHAT IS SILVAIR?

Silvaair is a software and commissioning app that connects and controls lighting fixtures using Bluetooth mesh technology.

HOW DOES IT CONNECT?

Silvaair can be set up in advance through the cloud and the Silvaair portal. It can also be commissioned in the field with the IOS app.

DOWNLOAD SILVAIR APPS



MOBILE APP Apple App Store
or
WEB APP platform.silvaair.com

